

# Corporate Partnerships at The ClementJames Centre



Releasing potential in the community since 1981



“Some of our employees volunteered at the women's self-care event and said it was very rewarding. **We are lucky to be able to work with such a great organisation.**”

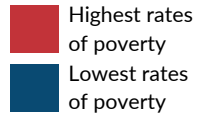
**ClementJames Corporate Partner**

# Contents

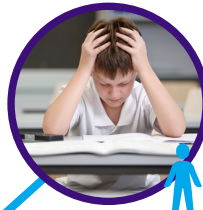
Why do we exist?	Page 1
Making a difference	Page 2
Become a ClementJames Corporate Partner	Pages 3-4
Volunteer with us	Page 5



# Why do we exist?



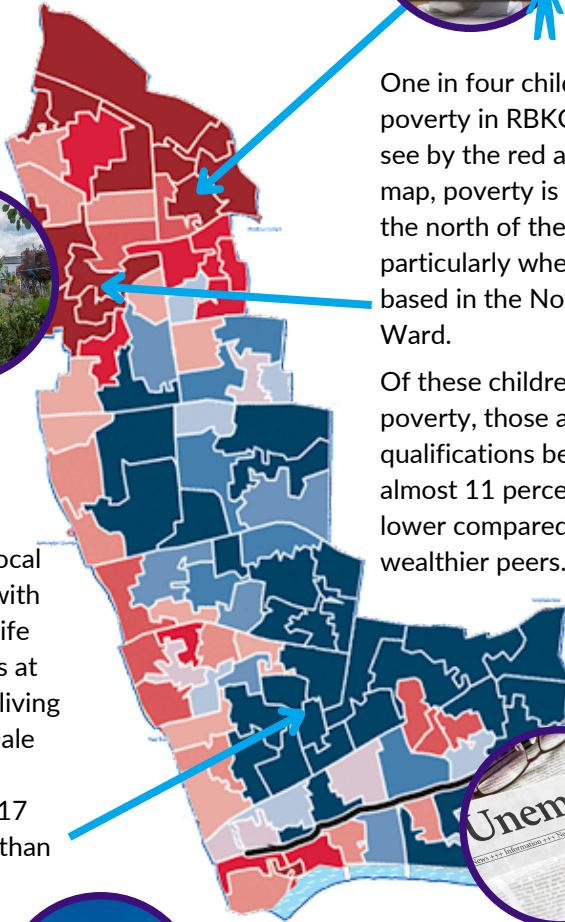
**1**  
**5** of RBKC households' first language is not English, and many residents feel unconfident in their maths and ICT abilities.



One in four children live in poverty in RBKC. As you can see by the red areas on this map, poverty is condensed in the north of the borough, particularly where our Centre is based in the Notting Dale Ward.

Of these children living in poverty, those achieving qualifications beyond GCSEs is almost 11 percentage points lower compared to their wealthier peers.

Whilst the borough is among the local authorities with the highest life expectancies at birth, males living in Notting Dale have a life expectancy 17 years lower than their peers living just a short drive away in Courtfield.



In Notting Dale, 68.1% of households suffer from at least one form of deprivation, and the borough as a whole has a higher unemployment rate than Great Britain.

# Making a difference

The ClementJames Centre is a resource centre based in Kensington and Chelsea. We provide essential services for some of the most marginalised communities, and aim to achieve equality of opportunity through five key programmes that address underachievement and social exclusion in the borough: Adult Learning, Children & Young People's Education, Employment Support, Wellbeing Support and Information, Advice & Guidance. **Last year, we supported over 850 adults and 1,700 children and young people with these programmes.**

## Crunching the numbers: 2021/22

65%

of those who received intensive 1-2-1 literacy and numeracy support made a year's progress in nine weeks



89%

of our Adult Learning students across English, maths and ICT achieved the outcomes of their course

357

advice issues were resolved for our clients by the team, covering topics such as **benefits, grants and access to food banks**

59%

of clients who received 1-2-1 Employment Support found work or training



**"Every time I have come to CJ, I have had the support of lovely people when I was at my lowest. I have found employment but also this has been a safety net for me. You have helped me regain my confidence."**

ClementJames Client



# Become a ClementJames Corporate Partner today...

Sustainable funding is key to the success of our programmes. In an increasingly challenging and competitive fundraising environment, we are seeking long-lasting partnerships to ensure that we can keep our programmes running and to guarantee that we can continue to remunerate our staff fairly for the essential work they are doing. Some of the corporates we have worked with include:



**Fund an installment of one of our crucial programmes for £750 and give clients the skills and confidence to last a lifetime.**

## You can also:

- Work with us as your Charity of the Year
- Volunteer with us (see p.5)
- Provide training for our staff
- Become key donors during our annual
- Champions for Children matched funding campaign
- Encourage staff fundraising through individual challenges



## ...and together we can support the community to release its potential!

We are seeking to build partnerships with organisations aligned with our mission of everybody in our community releasing their potential and living fulfilled lives through fighting poverty, unemployment and isolation. We can help you make an impact in your community and meet your objectives as a business. As a ClementJames Corporate Partner, you will receive:



- Bespoke reporting from our Fundraising Team
- The opportunity for social media collaborations
- The ability to meet your Corporate Social Responsibility targets
- Staff team-building and upskilling through professional and worthwhile volunteer days
- A feature in our annual Impact Report
- Access to charity fundraising events
- The chance to support your local community and contribute to impact like this:

**"Hats off to CJ because everyone working there are hardworking people who give it their all and always go the extra mile for you. They are friendly, supportive and sympathetic and they are always ready to listen to me when I am in distress. I don't know what I would have done without CJ."**

**"I feel so safe here ... you guys are part of my extended family."**

ClementJames Clients

# Volunteer with us

We are proud of the vital support programmes and events that we run throughout the year. Your team can get involved and make a difference in our clients' lives, whilst also developing their own soft and practical skills to take back to the workplace.



## Employment Support

We hold regular employment-focused day events for clients to develop their skills and confidence with the support of corporate volunteers:

- **Interview Skills Day / 10 - 12 volunteers**
- **Communication Skills Day / 10 - 12 volunteers**



## Wellbeing Support

We also provide day events with a focus on wellbeing, allowing clients to relax, have fun and socialise with other members of the community:

- **Wellbeing Day / 10 - 12 volunteers**
- **Women's Self-Care Day / 10 - 12 volunteers**
- **Client Festive Celebration / 10 - 12 volunteers**



## Children & Young People

Our support for children and young people ranges from creative holiday programmes to catch-up academic sessions:

- **Notting Hill Carnival Arts Programme / 10 - 12 volunteers**
- **One-to-one Literacy & Numeracy sessions / 10 - 12 volunteers**

Find out more about our volunteering opportunities by viewing our volunteering calendar and arranging a chat with our Volunteer Coordinator.





"It was a really good day for exercising my coaching, mentorship and giving feedback skills and **it felt fulfilling to give back to the community in a small way.**"

**ClementJames Corporate Partner**



If you would like to speak to our team about becoming a Corporate Partner, please email [fundraising@clementjames.org](mailto:fundraising@clementjames.org) or give us a call on **020 7221 8810**.